



625 Central Avenue
Westfield, NJ 07090
1-800-818-2932
Fax: 908-232-5219
www.wbcindustries.com

Aplix[®] High Temp P.S.A.

SUPPLIER NAME:

**WBC INDUSTRIES
625 CENTRAL AVENUE
WESTFIELD, NJ 07090
1-800-818-2932**

COMMERCIAL PRODUCT NAME:

**Aplix[®] High Temp P.S.A.
(Pressure Sensitive Adhesive)**

MANUFACTURER:

Aplix, Inc.
12300 Steele Creek Road
Charlotte, NC 28273

DESCRIPTION:

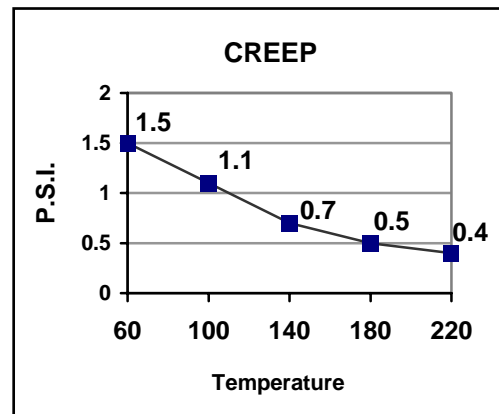
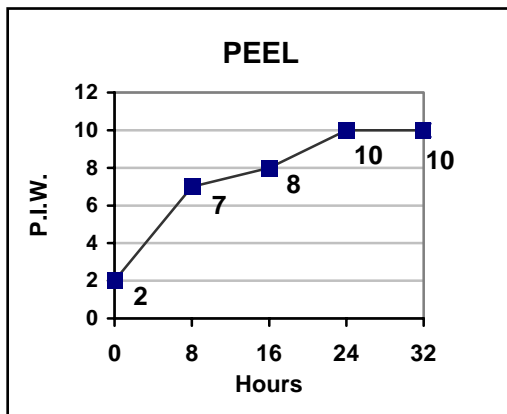
- Pressure Sensitive Adhesive (P.S.A.) designed for applications requiring high temperature resistance and/or attachment to Sintra[®], Vinyl, PVC, ABS, Plexiglas, and Polycarbonate.

PHYSICAL PROPERTIES:

- Acrylic water based Pressure Sensitive Adhesive
- Temperature Range: -30° to 220°F (-34° to 104°C)
- Shelf Life: 1 year from manufacturing date, when stored in original packaging at 70°F (21°C), 50% relative humidity

PERFORMANCE CHARACTERISTICS:

- P.S.A. main characteristics are:
 - **Peel** or adhesion power, measured in Pounds per Inch Width (P.I.W.)
 - **Creep**: the capacity of the P.S.A. to remain in position while under load; measured in Pounds per Square Inch (P.S.I.)



Tests performed on stainless steel at 73°F (23°C) and 50% relative humidity. Data average of multiple tests.

Aplix[®] High Temp P.S.A., continued

CERTIFICATION:

- Aplix[®] High Temp PSA complies with the following specifications:
 - General Motors GM 3618M
 - Ford ESBM11P25-A

DIRECTIONS FOR USE:

- Apply at temperature above 68°F (20°C)
- Make sure the substrate is clean, dry, and free of dust and oil
- Remove the release liner and press into place with firm, even pressure
- Allow at least one hour before loading and disengaging the tapes
- Best performance will be obtained after 24 hours
- Initial adhesion is not an accurate test for measuring performances

There is no express warranty, and all implied warranties, including those of merchantability or fitness for a particular purpose, are hereby excluded. Liability for incidental or consequential damages under any and all warranties is hereby excluded to the extent exclusion is permitted by law. All statements, technical device and recommendations contained herein are based on tests believed to be reliable as of 2004, but the accuracy thereof is not guaranteed. Before using, user shall determine the suitability of the product for his intended use, and user assumes all risks and liability whatsoever in connection therewith.